



Patterns & Instructions for GUM LEAF BABY

Tools

- Craft Scissors
- Craft Glue
- Low-Temp Hot Glue Gun (optional)
- Embroidery needle
- Stuffing stick (Bamboo skewer)
- Marking pen (Air erasable)

Materials

- Two 5x15cm Olive Green wool felt for gum leaf (top & base)
- Two 3x4cm Light Purple wool felt for baby body
- Embroidery cotton threads: Green, Purple (to match felts)
- Cotton pipe cleaner (cut 5cm)
- 14mm (or 16mm) bead
- Acorn cap (if not, you can cut triangle felt and make a hat)
- Merino wool filling

Finished size

Leaf: 4cm wide x 14.5cm long | Baby: 2.5cm wide x 5.5cm long



For more patterns visit:
www.wondersparkle.etsy.com



Wonder
Sparkle

For more patterns visit:
www.wondersparkle.etsy.com

FREE OF COPYRIGHT

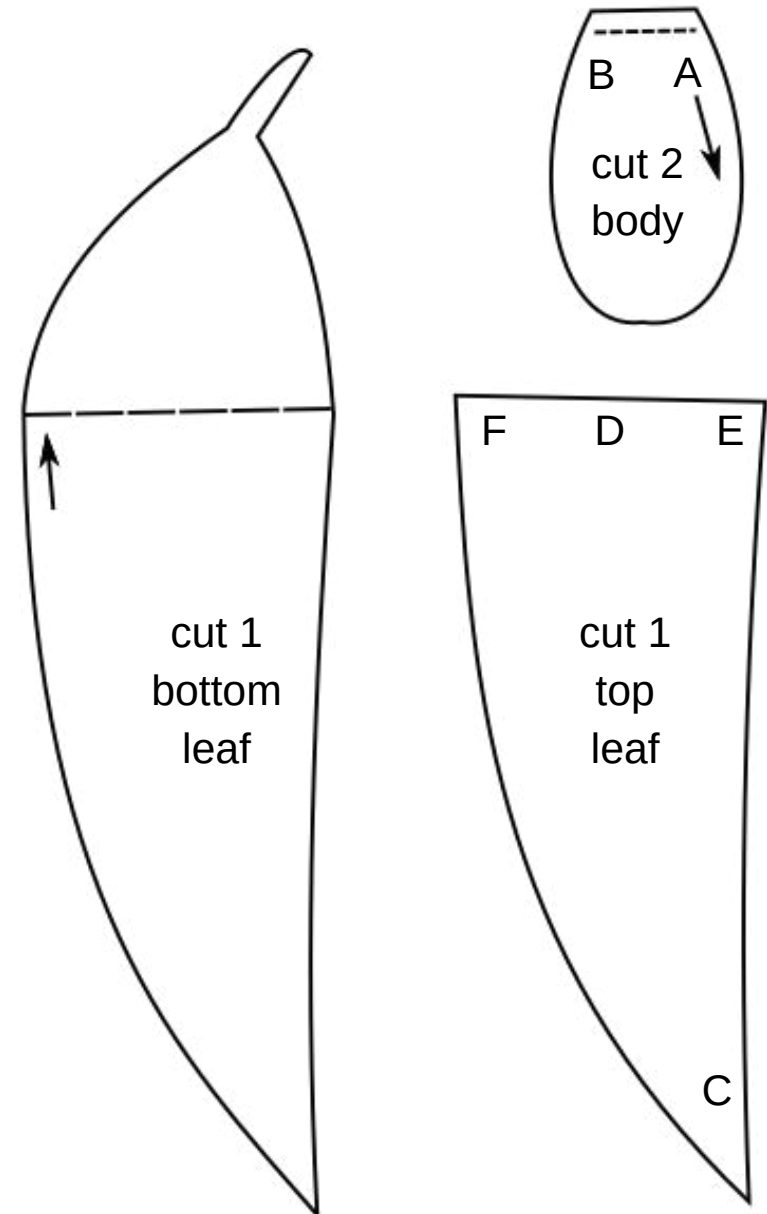
I'm happy for you to copy and share this pattern but please don't use to "re-sell" as I'm selling this product.

To start

- Gather the tools and materials. Cut out felt according to pattern using scissors. Make sure your two pieces match when placed on top of one another.
- Use 2 strands of embroidery threads (cut about 50cm of 6 stranded thread, and split two off, careful to avoid tangles).
- Blanket stitch is generally used to put it together.

Baby

1. Fold the pipe cleaner half, put small amount of glue at the end and push through the bead's hole. Choose a nice clean side of the bead to be the face.
2. Using blanket stitch, sew from 'A' to 'B'. Then stuff good amount of wool inside.
3. Position the bead (head) with the pipe cleaner (put small amount of glue at the end) in the middle, connect together by sewing blanket stitch & whipstitch.
4. Glue the acorn cap to the head (bead) using low temp glue gun. (craft glue will work too but need to hold longer to dry.)





For more patterns visit:
www.wondersparkle.etsy.com

Gum leaf

1. Top leaf, using split stitch, create middle line from 'C' to 'D'.
2. Blanket stitch from 'E' to 'F' top leaf only.
3. Once you reach 'F', grab the bottom leaf and start putting together using blanket stitch in the clockwise. Make sure you have enough length of threads to go over the top part of leaves (part where only bottom leaf) to have a clean look without needing to re-start the thread with a knot.
4. Keep sewing until you return to 'F'.



Completed?
Well done! You made it!! :)



Patterns & Instructions for OAK TREE ACORN BABY

Tools

- Craft Scissors
- Craft Glue
- Low-Temp Hot Glue Gun (optional)
- Embroidery needle
- Stuffing stick (Bamboo skewer)
- Marking pen (Air erasable)

Materials

- Two 6x10cm Light Brown wool felt for acorn leaf (top & base)
- Two 3x4cm Dark Green wool felt for baby body
- Embroidery cotton threads: Brown, Green (to match felts)
- Cotton pipe cleaner (cut 5cm)
- 14mm (or 16mm) bead
- Acorn cap (if not, you can cut triangle felt and make a hat)
- Merino wool filling

Finished size

Leaf: 6cm wide x 10cm long | Baby: 2.5cm wide x 5.5cm long



For more patterns visit:
www.wondersparkle.etsy.com



For more patterns visit:
www.wondersparkle.etsy.com

To start

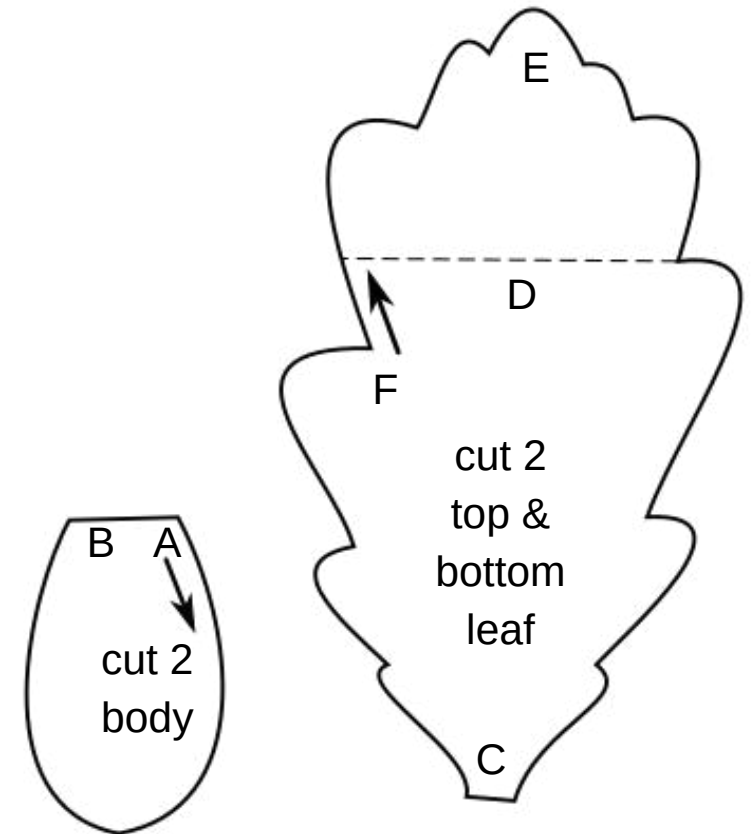
- Gather the tools and materials. Cut out felt according to pattern using scissors. Make sure your two pieces match when placed on top of one another.
- Use 2 strands of embroidery threads (cut about 50cm of 6 stranded thread, and split two off, careful to avoid tangles).
- Blanket stitch is generally used to put it together.

Baby

1. Fold the pipe cleaner half, put small amount of glue at the end and push through the bead's hole. Choose a nice clean side of the bead to be the face.
2. Using blanket stitch, sew from 'A' to 'B'. Then stuff good amount of wool inside.
3. Position the bead (head) with the pipe cleaner (put small amount of glue at the end) in the middle, connect together by sewing blanket stitch & whipstitch.
4. Glue the acorn cap to the head (bead) using low temp glue gun. (craft glue will work too but need to hold longer to dry.)

FREE OF COPYRIGHT

I'm happy for you to copy and share this pattern but please don't use to "re-sell" as I'm selling this product.





For more patterns visit:
www.wondersparkle.etsy.com

Acorn leaf

1. Top leaf, using split stitch, create leaf lines from 'C' to 'D'. (refer to image below)
2. Fold the leaf forward, using split stitch, create leaf lines from 'D' to 'E'. This will have the top leaf folded & held together.
3. Using blanket stitch, put top and the bottom leaf together from 'F' clockwise. Make sure you have enough length of threads to go over the top part of leaves (part where only bottom leaf) to have a clean look without needing to re-start the thread with a knot.
4. Keep sewing until you return to 'F'.





Patterns & Instructions for AUTUMN LEAF BABY

Tools

- Craft Scissors
- Craft Glue
- Low-Temp Hot Glue Gun (optional)
- Embroidery needle
- Stuffing stick (Bamboo skewer)
- Marking pen (Air erasable)

Materials

- Two 5x10cm Yellow Brown wool felt for the autumn leaf (top & base)
- Two 3x4cm Light brown wool felt for baby body
- Embroidery cotton threads: Brown, Brown (to match felts)
- Cotton pipe cleaner (cut 5cm)
- 14mm (or 16mm) bead
- Acorn cap (if not, you can cut triangle felt and make a hat)
- Merino wool filling

Finished size

Leaf: 4cm wide x 9.5cm long | Baby: 2.5cm wide x 5.5cm long



For more patterns visit:
www.wondersparkle.etsy.com



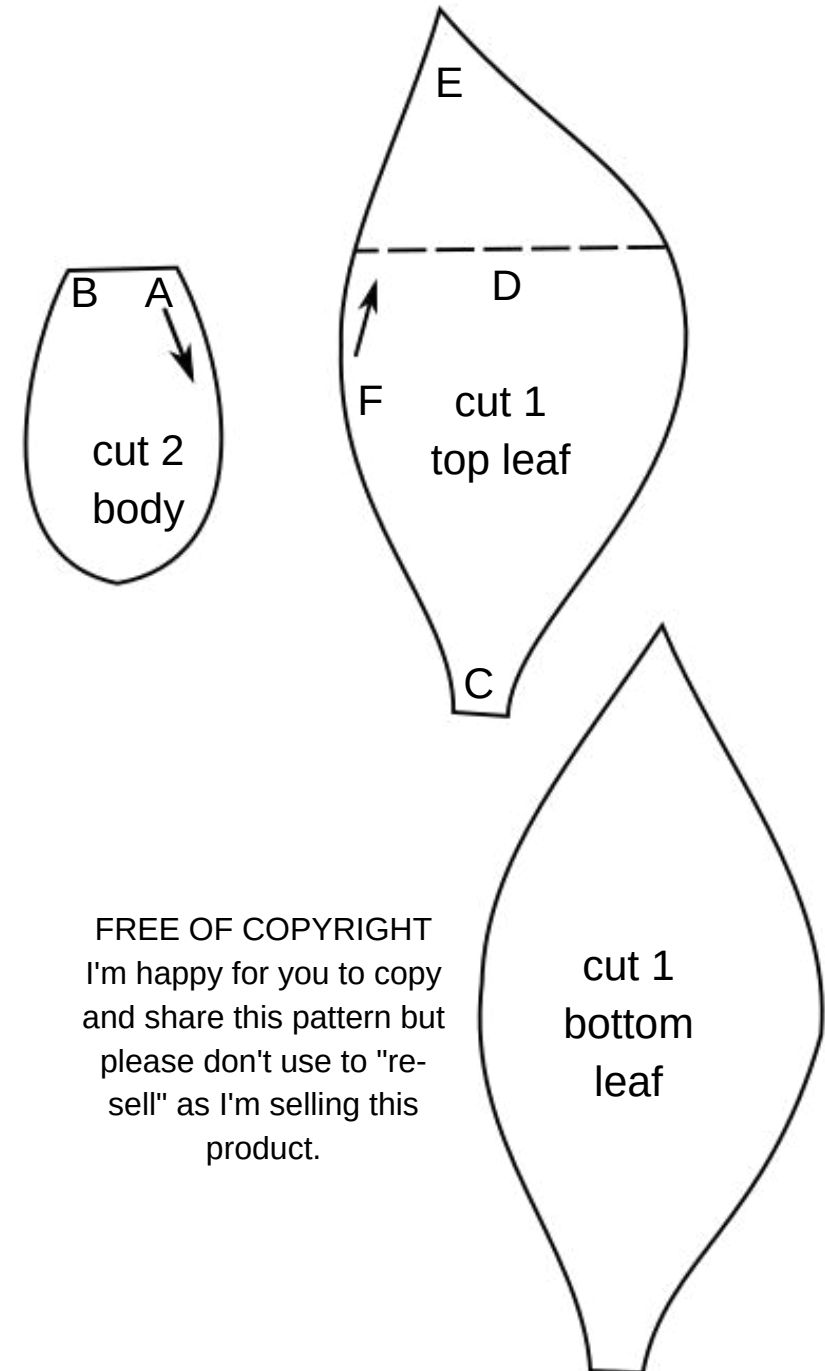
For more patterns visit:
www.wondersparkle.etsy.com

To start

- Gather the tools and materials. Cut out felt according to pattern using scissors. Make sure your two pieces match when placed on top of one another.
- Use 2 strands of embroidery threads (cut about 50cm of 6 stranded thread, and split two off, careful to avoid tangles).
- Blanket stitch is generally used to put it together.

Baby

1. Fold the pipe cleaner half, put small amount of glue at the end and push through the bead's hole. Choose a nice clean side of the bead to be the face.
2. Using blanket stitch, sew from 'A' to 'B'. Then stuff good amount of wool inside.
3. Position the bead (head) with the pipe cleaner (put small amount of glue at the end) in the middle, connect together by sewing blanket stitch & whipstitch.
4. Glue the acorn cap to the head (bead) using low temp glue gun. (craft glue will work too but need to hold longer to dry.)





For more patterns visit:
www.wondersparkle.etsy.com

Autumn leaf

1. Top leaf, using split stitch, create middle line from 'C' to 'D'. (refer to image below)
2. Fold the leaf forward, using split stitch, create middle line from 'D' to 'E'. This will have the top leaf folded & held together.
3. Using blanket stitch, put top and the bottom leaf together from 'F' clockwise. Make sure you have enough length of threads to go over the top part of leaves (part where only bottom leaf) to have a clean look without needing to re-start the thread with a knot.
4. Keep sewing until you return to 'F'.



Completed?
Well done! You made it!! :)